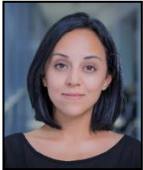


Who's who



Melina Altamirano (maltamirano@colmex.mx) is Assistant Professor at the Center for International Studies at El Colegio de México (Colmex) in Mexico City. Her work focuses on the political economy of the informal sector; redistributive politics and social policy transformation in developing countries. She earned her Ph.D. in Political Science in 2015 at Duke University with a dissertation on the political consequences of economic informality in Latin America.



Vivek Raj Anand (vivekrajand@nls.ac.in) is a second-year student of Master of Public Policy (MPP) at National Law School of India University, India. He has a deep interest in Political Economy and Public Finance. He is currently working on the areas of 'Performance based voting', Elections, Fiscal Opportunism, Fiscal Policy and Fiscal Management. He is also a qualified Chartered Accountant and has worked with consulting firms like KPMG and BMR Advisors in M&A and Investment Banking space. After having worked for more than 7 years, he has joined NLSIU to pursue MPP degree. He wishes to continue researching in the aforesaid areas of his interest.



Florencia Antía (florenciaantia@gmail.com) is Assistant Professor of Political Science at the *Universidad de la República*, in Uruguay, and member of the National Researchers System of that country. Her research focuses on issues of comparative political economy, with a particular interest in social policy and the politics of redistribution in Latin America. She received a Ph.D. in Political Science from *Instituto de Estudos Sociais e Políticos, Universidade Estadual de Rio de Janeiro*, Brazil, and holds a B.A. in Political Science from the *Universidad de la República*, Uruguay.



Sonja Avlijaš (s.avlijas@lse.ac.uk) is a post-doctoral research fellow at the Laboratory for Interdisciplinary Evaluation of Public Policies (LIEPP) at Sciences Po and editor of the 'Europe in Question' Discussion Paper Series at the LSE's European Institute. Sonja hold a PhD in political economy from the LSE. Her research interests cover capitalist diversity, labour markets, gender, social investment and the knowledge economy. She is particularly interested in how the experience of post-socialist transition in Eastern Europe can help us to understand the evolution of capitalist political economies in the era of globalisation. Sonja has also worked at the Deputy Prime Minister's Office of the Government of Serbia, and as an independent consultant, she has collaborated with the European Commission, UN Women, ILO, the World Bank and USAID.



Armando Barrientos (a.barrientos@manchester.ac.uk) is Professor of Poverty and Social Justice at the Global Development Institute at the University of Manchester in the UK. His research focuses on the linkages existing between welfare programmes and labour markets in developing countries, and on policies addressing poverty and population ageing. His most recent books are 'Social Protection for the Poor and Poorest' (2008, edited with D. Hulme, Palgrave); 'Just Give Money to the Poor' (2010, with J. Hanlon and D. Hulme, Kumarian Press); 'Demographics, Employment and Old Age Security: Emerging Trends and Challenges in South Asia' (2010, edited with Moneer Alam, MacMillan), and 'Social Assistance in Developing Countries' (2013, Cambridge University Press).



Juan A. Bogliaccini (juan.bogliaccini@ucu.edu.uy) is Associate Professor at the Department of Social and Political Sciences at the Universidad Católica del Uruguay. He is a national of Uruguay also. He has a PhD in Political Science from the University of North Carolina at Chapel Hill (2012), a MA in Education Policy from the Alberto Hurtado University in Chile (2005), and a BA in Sociology from the Universidad Católica del Uruguay (2001). His research focuses in the study of the political economy of capitalist systems, welfare states and related public policy issues. His academic production has been published in several journals and edited books, including Latin American Research Review, CEPAL Review, Revista del CLAD, The Oxford Handbook of the Welfare State and The International Handbook of Urban Education. He was founding chair of the Department of Social and Political Sciences at the Universidad Católica del Uruguay (2012-2016).



Katharina Böhm (Katharina.Boehm@rub.de) is a junior professor for Health Policy and Politics at the Faculty of Social Science, Ruhr-University Bochum (Germany). After her vocational training as a nurse, she studied economics and political sciences at Goethe-University Frankfurt. Katharina worked as a doctoral researcher at the Department of Medical Sociology, Goethe-University Frankfurt and as a doctoral researcher in a research project on health care priority-setting at the Department of Political Science, Gutenberg-University Mainz (led by Prof. Claudia Landwehr). Katharina gained her doctoral degree in 2015 with a dissertation on healthcare entitlement reforms in England and Germany, which was just published by Routledge. In an ongoing research project Katharina investigates the implementation of a new law on health promotion and disease prevention by local governments in Germany. Her main research interests are welfare state change, health policy reforms, and the Europeanisation of health policy.



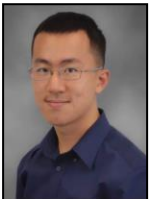
Björn Bremer (bjoern.bremer@eui.eu) is a PhD Candidate in the Department of Social and Political Sciences at the European University Institute (EUI) and a Doctoral Researcher in the POLCON project. He holds degrees from the University of Oxford and the School of Advanced International Studies (SAIS) at Johns Hopkins University. He was also a visiting researcher at the WZB Berlin Social Science Center and the London School of Economics and Political Science. His research lies at the intersection of political science and economics and focuses on the politics of macroeconomic policies and the welfare state. In his PhD he studies the fiscal policies of social democratic parties in response to the Great Recession.



Reto Bürgisser (Reto.Burgisser@eui.eu) is a Ph.D researcher at the European University Institute. His main areas of interest are political economy and comparative politics with a special focus on policy preferences, electoral behaviour and the politics of welfare state transformation in Southern and Continental Europe. He studied political science and sociology at the University of Zurich and the Central European University. He worked as research assistant in social policy evaluation at the Lucerne University of Applied Sciences and Arts (2008-2012) and as a research and teaching assistant at the Department of Political Science at the University of Zurich (2011-2014).



Marius R. Busemeyer (Marius.Busemeyer@uni-konstanz.de) is a Full Professor of Political Science at the University of Konstanz, Germany. His research focuses on comparative political economy and welfare state research, education and social policy, public spending, theories of institutional change and, more recently, public opinion on the welfare state. Busemeyer studied political science, economics, public administration and public law at University of Heidelberg and the Harvard Kennedy School of Government. He holds a doctorate in political science from the University of Heidelberg. He worked as a senior researcher with Wolfgang Streeck and Kathleen Thelen at the Max Planck Institute for the Study of Societies in Cologne and was a post-doc visiting fellow at the Center for European Studies at Harvard before coming to Konstanz. His publications include a book on *Skills and Inequality* (Cambridge University Press, Winner of the 2015 Stein Rokkan Prize for Comparative Social Science Research), an edited volume (with Christine Trampusch) on *The Political Economy of Collective Skill Formation* (Oxford University Press) as well as a large number of journal articles in leading outlets of the discipline such as the *British Journal of Political Science*, the *European Sociological Review*, the *Socio-Economic Review* and the *Journal of European Social Policy*. He directs the project “Investing in Education in Europe”, funded by a Starting Grant from the European Research Council (ERC).



Haohan Chen (haohan.chen@duke.edu) is a third-year PhD student at Duke University. He works at the intersection of political economy, political behavior and computational methods. His research examines the formation of perception on inequality and distributive justice using survey, survey experiment and social media data. Under the theme, Haohan currently focuses two streams of research. One of his ongoing projects examines how clientelistic politics shape citizens’ redistributive preference in developing democracies, extending upon conventional formal model of distributive politics and testing it with cross-national survey data. Another stream of his research attempts to understand how people in authoritarian China perceive distributive justice using text and network data on the social media. Haohan holds a Bachelor of Social Sciences from the University of Hong Kong.



Claire Dunn (claire.e.dunn@gmail.com) is a PhD student at the University of North Carolina at Chapel Hill. Her research focuses on Latin American politics. She is currently working on projects examining the state of social investment in Latin America and the effects of conditional cash transfer programs on political participation.



Niccolo Durazzi (N.Durazzi@lse.ac.uk) is a PhD candidate in the Department of Social Policy at the London School of Economics and Political Science (LSE). His research focusses on skill formation in post-industrial societies, with a specific interest on the increased relevance of high- and low- skills vis-à-vis intermediate skills. In particular, one stream of research is mostly concerned with dynamics of high skill formation and the institutional arrangements that underpin skill formation at the university-business nexus across advanced capitalist countries. A second stream of research looks at the integration of the low achievers in the training system as well as the organisation of training and social protection for labour market outsiders. Prior to starting his PhD, Niccolo worked as a project officer, project manager and then deputy director of LSE Enterprise, the consulting arm of the LSE, where he managed several policy research projects for European institutions and national governments focussing in particular on education and labour market policy. He holds an MSc in European Political Economy from the LSE European Institute and MA and BA degrees in Political Science from the University of Bologna.



Tracy Beck Fenwick (tracy.fenwick@anu.edu.au) is the Director, of the Australian Centre for Federalism (SPIR), and a lecturer in political science at the Australian National University. She was previously a Post-Doctoral Fellow at the Johnson-Shoyama Graduate School of Public Policy at the University of Saskatchewan. She completed her doctorate specializing in Comparative Politics at the University of Oxford, U.K. in 2009 (St. Anthony's College). She holds a M.A. in Comparative Politics and a B.A. in Latin American Studies and Economics from McGill University, Canada. Her research was recently published in a single-authored book: (2016) "Avoiding Governors: Federalism, Democracy, and Poverty Alleviation in Brazil and Argentina." Indiana: University of Notre Dame Press. She also recently published in *Global Social Policy* (2013), the *Journal of Politics in Latin America* (2010), and in the *Latin American Research Review* (2009). Tracy has been a visiting researcher at the Universidade Federal da Bahia (UFBA), the Fundação Getulio Vargas (FGV-SP), and, at the National University of San Martin (UNSAM).



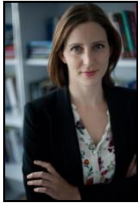
Julian L. Garritzmann (julian.garritzmann@uzh.ch) is Replacement Professor of the Chair of Political Science at the University of Konstanz, Germany, and Senior Researcher at the Department of Political Science at the University of Zurich, Switzerland. Julian received his PhD in political science from the University of Konstanz in 2015. He has been Visiting Scholar at Harvard and at Rutgers. Julian's main research areas include (the interaction of) social investment and compensatory social policies, party politics, and public opinion. His work has appeared in the *Journal of European Social Policy*, the *Journal of European Public Policy*, *West European Politics*, the *Journal of Legislative Studies*, and *PS: Political Science and Politics*. Julian's dissertation on "The Political Economy of Higher Education Finance" appeared with *Palgrave Macmillan* in 2016. His dissertation was a finalist for the *Deutscher Studienpreis 2016* and received the Doctoral Researcher Prize by the European Social Policy Analysis Network and the *Journal of European Social Policy*.



Leonard Geyer (leonard.geyer@uni-bamberg.de) is a doctoral fellow at the Bamberg Graduate School of Social Sciences (BAGSS). His dissertation research is on the comparative political economy of active labour market policies for young people in European countries. Next to his research, he worked on the evaluation of youth employment and youth training policies in Germany and other European countries for LSE Enterprise, Ramboll Management Consulting Berlin and the European Trade Union Institute (ETUI) in Brussels. Leonard Geyer holds an MSc in Political Economy of Europe from the European Institute of the LSE and a BA in European Studies from Maastricht University.



Eriko Hamada (eriko-h@mtc.biglobe.ne.jp) is a Postdoc Research Fellow at the Institute of Global Concern at Sophia University and the Department of Law, Politics, and Economics at Chiba University, Japan. She received her Ph.D. in political science from the Graduate Division of Law, Sophia University in 2016. Her research interests focus on comparing advanced welfare state reforms, with a special attention on youth policy in Japan and the UK. She has published numerous articles in both English and Japanese. Her research interests are the Comparative welfare state studies, Japanese politics, British politics, social policy.



Silja Häusermann (silja.haeusermann@ipz.uzh.ch) is a Professor of Political Science at the University of Zurich, Switzerland. Her research interests are in comparative politics and comparative political economy. Her current work deals with electoral and distributive politics in advanced post-industrial democracies, with protest behavior in the context of the Eurocrisis, with welfare politics, and with identifying policy preferences via experimental survey designs. She is the author of "The Politics of Welfare Reform in Continental Europe. Modernization in Hard Times" (CUP 2010) and a co-editor of "The Age of Dualization. The Changing Face of Inequality in Deindustrializing Societies" (OUP 2012), as well as "The Politics of Advanced Capitalism" (CUP 2015). www.mwpweb.eu/SiljaHaeusermann



Evelyn Huber (ehuber@ad.unc.edu) is Morehead Alumni Distinguished Professor of Political Science and Chair of the Department of Political Science at the University of North Carolina, Chapel Hill. She is the author and co-author of several books, including *Capitalist Development and Democracy* (with Dietrich Rueschemeyer and John D. Stephens, 1992); *Development and Crisis of the Welfare State* (with John D. Stephens, 2001); *Democracy and the Left: Social Policy and Inequality in Latin America* (with John D. Stephens, 2012); all winners of book awards. She has also contributed articles to a wide variety of journals in political science and sociology. She received an Honorary Doctorate from the University of Bern in 2010 and is a former president of the Latin American Studies Association. Link to my website: <http://huberandstephens.web.unc.edu/>



Carsten Jensen (CarstenJ@ps.au.dk) is Professor in political science at Aarhus University. His primary interests relate to the comparative politics of welfare states, including the reform strategies of center-right parties, causes and consequences of inequality, and voter reactions to welfare reforms. He has published in *American Journal of Political Science*, *British Journal of Political Science*, *Comparative Political Studies*, *European Journal of Political Research*, and *Socio-Economic Review*, among others. Oxford University Press and Palgrave Macmillan have published his recent books. He has been visiting researcher at Harvard, Princeton, and Australian National University.



Jane Jenson (jane.jenson@umontreal.ca) is a member of the Université de Montréal's political science department, where she was awarded the Canada Research Chair in Citizenship and Governance in 2001. She has also been a Senior Fellow of the Successful Societies programme of the Canadian Institute for Advanced Research (CIFAR) since 2004. Her research focuses on comparative social policy, particularly the invention of the social investment perspective (SIP), and including the consequences for gender relations and women's status. Her most recent publications on the SIP is "Modernising the European Social Paradigm. Social Investments and Social Entrepreneurs." *Journal of Social Policy*, 46 (1), 2017 and "The Fading Goal of Gender Equality: Three Policy Directions that Underpin the Resilience of Gendered Socio-economic Inequalities." *Social Politics*, 22 (4), 2015. For more, see www.ccg.umontreal.ca.



Manon Jullien (manon.jullien@sciencespo.fr) is a Research Assistant at the Laboratory for Interdisciplinary Evaluation of Public Policies (LIEPP) since March 2016. She assists the Socio-Fiscal Policies Research Group.

Having followed a program at the University Paris-Dauphine where she obtained a Master's degree in Political and Social Studies and Research, she continued to pursue a Master's degree in Social Development at the Institute of Economic and Social Development Studies (University of Paris 1 Pantheon Sorbonne). Having professional experiences at the National Institute of the Demographic Studies (INED) and in the Ministry Social Affairs and Public Health, she joins the LIEPP to work with the Socio Fiscal Policies research group.



Herbert P. Kitschelt (h3738@duke.edu) (*Ph.D., Bielefeld, Germany*), George V. Allen Professor of International Relations in the Department of Political Science at Duke University specializes in political parties and elections and comparative political economy. He is a member of the American Academy of Arts and Sciences (AAAS). From 1993 to 1996, he also held a joint appointment with Humboldt University Berlin. Among his books and many articles, he is author, co-author or editor of ***Logics of Party Formation*** (Cornell University Press 1989), ***Beyond the European Left*** (Duke University Press, 1990), ***The Transformation of European Social Democracy*** (Cambridge University Press, 1994), ***The Radical Right in Western Europe*** (University of Michigan Press, 1995, winner of the American Political Science Association's Woodrow Wilson Foundation Award), ***Post-Communist Party Systems*** (Cambridge University Press, 1999), ***Continuity and Change in Contemporary Capitalism*** (Cambridge University Press), ***Patrons, Clients, and Policies*** (Cambridge University Press, 2007) and ***Latin American Party Systems*** (Cambridge University Press, 2010). Most recently, he co-authored and co-edited ***The Politics of Advanced Capitalism*** (Cambridge University Press, 2015). He is currently completing two research projects, one on democratic partisan linkage in competitive democracies around the world, based on the data collected under his direction by Democratic Accountability and Linkage Project (DALP), and one on partisan realignment in postindustrial democracies (together with Philipp Rehm).



Thomas Kurer (kurer@ipz.uzh.ch) is PhD researcher at the University of Zurich and currently Junior Visiting Scholar at Nuffield College (Oxford). He completed a MA in Political Science (major) and Economy (minor) at the University of Zurich and the Vrije Universiteit Amsterdam 2012-2014. His main research interests are in comparative politics and political economy. In his dissertation, he examines the political consequences of occupational change and technological innovation with a focus on the routinization of work and the political responses of the “declining middle”.



Triin Lauri (triin.lauri@tlu.ee) is a lecturer of public policy in Tallinn University in the school of Governance, Law and Society and post-doctoral researcher in the Tallinn University Centre of Excellence in Interdisciplinary Life-course Studies. Triin's main research interest has been education policy to which family policy and labour market policy related analysis have been recently added. One of her interests has been related to methodological challenges in researching contemporary public policy and welfare states and she has improved her methods' skills in ECPR (European Consortium for Political Research) Method Schools several times. Triin is lecturing on Public Policy, Welfare States, Reforms in Education Policy and Comparative Policy. Besides lecturing Triin is or has been participating in projects as: 2015-2018, AU14714 Social Exclusion of Youth in Europe: Cumulative Disadvantage, Coping Strategies, Effective Policies and Transfer which focuses on young unemployed; 2013-2015, Efficiency and equity in matching preschools and children: mechanism design approach (EEMD); 2012-2014, ETF8997 "SCHOOL CHOICE MECHANISMS: Efficiency, Stability and Segregation in Matching Students and Schools in Estonia (ESCM). Triin has published on comparative education policy, family policy and contemporary welfare states. Her research articles have appeared in Comparative Education, Scandinavian Journal of Educational Research, European Educational Research Journal and Journal of School Choice.



Margarita León (m.leonborja@gmail.com; margarita.leon@uab.cat) (URL at *Academia.edu*: <https://uab.academia.edu/MargaritaLeon>) is an Associate Professor of political Science at the Autonomous University of Barcelona (UAB) and a Senior Researcher in the Institute of Government and Public Policies (IGOP) of the same university. She has co-edited with A.M. Guillén *The Spanish Welfare State in European Context* (Ashgate, 2011) and edited *The Transformation of Care in European Societies* (Palgrave, 2014). Her fields of interest include comparative welfare research, Southern European welfare models, family and care policies, gender and migration. She is a board member of the European Social Policy Network (ESPAnet) and the Spanish Network of Social Policy (REPS).



Aldo Madariaga (aldomadariaga@gmail.com) is Postdoctoral researcher at the Institute of Public Policy, Universidad Diego Portales and the Center for Social Conflict and Cohesion Studies, Santiago de Chile. He has a PhD in Economic and Social Sciences from the University of Cologne (Germany) and the Max Planck Institute for the Study of Societies, a MA in Political Science from the Central European University (Budapest) and a BA in Sociology from Universidad de Chile. His research focuses on the comparative political economy of development, including areas such as industrial policy, social policy and education, and energy. He has recently published "Mechanisms of neoliberal resilience: comparing exchange rates and industrial policy in Chile and Estonia" in *Socio-Economic Review*.



Rianne Mahon (prmahon@rogers.com) holds a CIGI chair at the Balsillie School of International Affairs and is a Political Science Professor at Wilfrid Laurier University. She has published on labour market restructuring, the redesign of welfare regimes at the local, national and global scales, co-edited numerous books, and recently co-authored *Advanced Introduction to Social Policy* with Daniel Béland. Her current work focuses on the role of international organisations and the (lack of governance) of transnational care chains.



Asa Maron (asamaron@gmail.com) is a Lecturer (Assistant Professor) in the Sociology Department at the University of Haifa. Previously he held postdoctoral positions at Stanford University and the Hebrew University of Jerusalem. He is a political sociologist specializing in the sociology of the welfare state and neoliberalism, with an emphasis on the transformation of the state, its politics, institutional dynamics, and consequences for state–society relations. He is the co-editor of **Neoliberalism as a State Project: Changing the Political Economy of Israel** forthcoming in Oxford University Press (May 2017)



Kimberly J. Morgan (kjmorgan@gwu.edu) is a Professor of Political Science and International Affairs at George Washington University. Her work examines the politics shaping public policies in Western Europe and the United States, with particular interests in health care, family policy, and immigration. She is the author of *Working Mothers and the Welfare State: Religion and the Politics of Work-Family Policy in Western Europe and the United States* (Stanford 2006) and *The Delegated Welfare State: Medicare, Markets, and the Governance of American Social Policy* (Oxford 2011), and co-editor of two volumes, the *Oxford Handbook of US Social Policy* (Oxford 2015) and *The Many Hands of the State: Theorizing Political Authority and Social Control* (Cambridge 2017). Her articles have appeared in journals such as *American Journal of Sociology*, *Comparative Politics*, *Comparative Political Studies*, *Foreign Affairs*, *Politics & History*, *Social Politics*, and *World Politics*.



Nora Nagels (nagels.nora@uqam.ca) is an assistant professor in political science at the Université de Québec à Montréal (UQAM). She received her doctorate in development studies from the Graduate Institute, Geneva in 2013. Her thesis is titled *Genre et politiques de lutte contre la pauvreté au Pérou et en Bolivie: quels enjeux de citoyenneté?* She received a post-doctoral fellowship from the Fonds national suisse de la recherche scientifique (SNSF) to be held at the Research Chair in Citizenship and Governance (2013), where she pursued research on gender and conditional cash transfers (CCT) in Latin America. She then received a post-doctoral fellowship from the CERIUM of the Université de Montréal (2013-14) to continue this research, and particularly to examine the patterns of gender relations diffused with the social investment perspective in Latin America. Dr. Nora Nagel's research is concerned with gender, citizenship and social policies in Latin America. She has recently published on comparative politics, conditional cash transfers, development, citizenship and gender in leading journals such as *Social Policy & Administration*, *Revue internationale de politique comparée*, *Lien social et Politiques*, and *Social Policy & Society*.



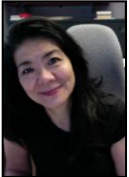
Bruno Palier (bruno.palier@sciencespo.fr) is CNRS Research Director at Sciences Po, Centre d'études européennes. Trained in social science, he has a PHD in Political science, and is a former student of Ecole Normale Supérieure. He is studying welfare reforms in Europe. He is co-director of LIEPP (Laboratory for interdisciplinary Evaluation of Public Policies). He was Guest Professor at the University of Stockholm (Spring 2009 and 2010), Visiting Scholar at Northwestern University (Spring quarter 2007), at Center for European Studies from Harvard University in 2001 and Jean Monnet Fellow in the European University Institute in Florence in 1998-1999. He is Member of the Society for the Advancement of Socio-Economics (SASE) Executive Council. Between 2007 and 2011, he was the scientific coordinator of an European Network of excellence RECWOWE (Reconciling Work and Welfare, involving 30 European research institutions or Universities, 190 researchers from 19 European countries). He has published numerous articles on welfare reforms in France and in Europe in *Global Social Policy*, *Governance*, *Journal of European Social Policy*, *New Political Economy*, *Politics and Society*, *Socio-Economic Review*, *West European Politics*, *Social Policy and administration*, *Social Politics* and various books. In 2012, he co-edited *The Age of Dualization: The Changing Face of Inequality in Deindustrializing Societies*. (with Emmenegger, Patrick, Häusermann, Silja, and Seeleib-Kaiser, Martin), Oxford University Press, and *Towards a social investment welfare state? Ideas, Policies and Challenges*, (with Morel, Nathalie and Palme, Joakim), Bristol: Policy Press.



Emmanuele Pavolini (e.pavolini@univpm.it) is Associate Professor in Economic Sociology and Social Policy at the University of Macerata (Italy). He has focused his research interests in two fields. The main one is comparative welfare state studies, publishing on: the Italian welfare state in comparative perspective; Southern European welfare states; specific social policies (family policies, elderly care / LTC, child care, social care and health care and, more recently, education); in inequalities in the access to welfare state provision; occupational welfare; welfare mix and third sector organizations. A second field of research is related to the functioning of the labour market, economic development and enterprises' behaviours.



Sony Pellissery (sony.pellissery@stx.oxon.org) is coordinator of Master of Public Policy programme at National Law School of India University, Bangalore (India). His most recent work in the field of social investment is a contribution titled “Social Investments and Poor Families in India: The Role of Employment and Early Childhood Programs” to be included in a book being edited by James Midgely et al (forthcoming). He has handled major research projects funded by Economic and Social Research Council, UK, Norwegian Research Council, Netherlands Academy of Social Sciences, National Science Foundation, USA, and Indian Council of Social Science Research, New Delhi. He has been awarded with three prestigious awards for social scientists in India, namely, Ford Foundation International Fellowship (2002), India Social Science Award (IDRC, Canada) in 2010 and Ram Reddy Memorial Social Scientist Award in 2015.



Ito Peng (itopeng@chass.utoronto.ca) is a Professor of Sociology and Public Policy, and Canada Research Chair in Global Social Policy at the Department of Sociology, and the School of Public Policy and Governance, University of Toronto. She has written extensively on family, gender and social policies in East Asia. She currently leads a large international partnership research project entitled *Gender, Migration, and the Work of Care* funded by Social Sciences and Humanities Research Council of Canada. The project brings together over 50 researchers and non-academic partners to examine how the reorganization of care influences the global migration of care workers, and how this in turn impacts family and gender relations, gender equality, government policies, and global governance.



J. Salvador Peralta (jperalta@westga.edu) is Associate Professor and Chair of Political Science at the University of West Georgia. He received his Ph.D. from the University of Arizona in 2006. His research and teaching interests are in the areas of Comparative Politics and American Politics. His current research focuses on legislative development, executive-legislative relations, and the politics of public policy with an emphasis on the politics of higher education in Latin America, and policy framing in the U.S. His most recent publications have appeared in *PS: Political Science and Politics*, *Politics & Policy*, *Social Science Quarterly*, and as chapters in *Underpinning Leadership: The Presidential Office in Latin America, USA, and Spain*, and *The International Politics of Higher Education*, from Palgrave and Routledge respectively.



Dr. **Michał Polakowski** (mpolakowski@icra.pl) is a researcher at the Department of Labour and Social Policy, Poznań University of Economics and Business. Trained as a political scientist, he is interested in comparative social policy, with a focus on labour market policy, old-age pensions, family policy and migration. Also, he is interested in political economy of welfare state reforms, especially in Central and Eastern Europe. Currently he is running a comparative project on pension reforms in the context of crisis in seven European countries between 1990 and 2015.



Stefano Ronchi (ronchi@wiso.uni-koeln.de) is a doctoral candidate of the Research Training Group SOCLIFE at the University of Cologne. His research interests range from comparative welfare state analysis to labour market and social inequality, mixing both quantitative and qualitative methods. He was InGRID visiting fellow at the Centre for Social Policy in Antwerp in May 2016. He previously took his Master in International Labour and Social Policies at the University of Milan, and a research Master in Public Policy and Social Change at Collegio Carlo Alberto (Turin). His Master thesis in Milan won a local prize as best dissertation on social policy. He also collaborated with the project "Percorsi di Secondo Welfare" at the Research Centre Luigi Einaudi of Turin.



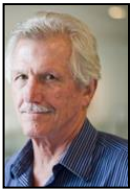
Cecilia Rossel (mcrossel@gmail.com) is a Sociologist and Phd in Goevrnment and Public Administration (Instituto Universitario Ortega y Gasset – Universidad Complutense de Madrid). My research focuses on citizen-public administration relationship (state-third sector relationships, links between bureaucracies and citizens), the political economy of social policy, and welfare regimes and inequality in Latin America. I work as Assistant Professor and the Political and Social Sciences Department, Catholic University in Uruguay.



Martin Seeleib-Kaiser (martin.seeleib@spi.ox.ac.uk) is Barnett Professor of Comparative Social Policy and Politics and Professorial Fellow of St Cross College, University of Oxford and in 2016/2017 Visiting Professor at the Wissenschaftszentrum Berlin (WZB). He studied Political Science, American Studies and Public Law at Ludwig-Maximilians University in Munich (Germany) (MA 1989; Dr phil 1993) and was awarded the *venia legendi* in political science (habilitation) by Bremen University (Germany) (2001). Prior to his initial appointment at Oxford in 2004, he held appointments at the Universities of Bremen and Bielefeld (Germany) as well as Duke University (North Carolina, USA). Seeleib-Kaiser's research focuses on the politics of social policy and comparative social policy analysis. Currently, his research primarily focuses on the social rights of EU migrant citizens. He has published widely in English and German, among others in: *American Sociological Review*, *Comparative Political Studies*, *Journal of Common Market Studies*, *Journal of European Social Policy*, *Politics and Society*, *Politische Vierteljahresschrift*, *Social Policy and Administration*, *Social Politics*, *West European Politics* and *Zeitschrift für Soziologie*.



Dr. **Jaemin Shim** (jameshim83@gmail.com) is currently a JSPS post-doctoral research fellow at the University of Tokyo and an associate fellow at the German Institute of Global and Area Studies (GIGA). He has received a PhD in Politics at the University of Oxford in October 2016 and his primary research interests lie in comparative welfare states, political institutions, and legislative politics. His dissertation entitled "Welfare Politics in Northeast Asia: An Analysis of Welfare Legislation Patterns in South Korea, Japan, and Taiwan" investigates how changing power structure affect incentives and constraints of elected politicians and elite bureaucrats in supporting different types of welfare bills by applying both quantitative and qualitative methods to his original dataset. Dr Shim's wider work covers gender and politics, presidentialism, mixed-methods, party systems and cleavages. Building on his PhD project, he is currently working on a three-year global project "Convergence versus Divergence of Mass-Elite Political Cleavages: Conceptual, Methodological, and Theoretical Innovations"



John D. Stephens (jdsteph@unc.edu) Gerhard E. Lenski, Jr. Distinguished Professor, Political Science Department; Director, Center for European Studies, Jean Monnet Center of Excellence, and Trans-Atlantic Masters program, University of North Carolina, Chapel Hill. His main interests are comparative social policy and political economy, with area foci on Europe, the Antipodes, Latin America, and the Caribbean. He is the author or co-author of five books including *Capitalist Development and Democracy* (with Evelyne Huber and Dietrich Rueschemeyer, 1992), *Development and Crisis of the Welfare State* (with Evelyne Huber, 2001), and *Democracy and the Left: Social Policy and Inequality in Latin America* (with Evelyne Huber, 2012) and numerous journal articles.



Dorota Szelewa (dszelewa@icra.pl) is currently a Lecturer in Social Justice at University College Dublin, School of Social Policy, Social Work and Social Justice. Her main areas of expertise are: gender and public policy, migration, reproductive rights, comparative welfare state, political economy of East European transformation and the process of Europeanization. After completing her doctoral studies at the European University Institute in Florence, Dorota worked at the University of Southern Denmark in Odense, at the Bremen International Graduate School of Social Sciences and at Warsaw University (Institute of Social Policy). Her recent publications include a chapter on the current developments in Polish family policies, an article on the impact of the Catholic Church on abortion law (*Social & Legal Studies*), the analysis of Poland as involved in a migration chain (*Transfer*) and a chapter introducing the concept of social investment (in Polish).



Anu Toots (anuto@tlu.ee) is Professor of Social Policy and senior member in Centre of Excellence in Interdisciplinary Life-Course Studies in Tallinn University, Estonia. Her research interests include governance of the welfare state, transformation of the post communist welfare regimes, and educational reforms around the world. She has been extensively engaged in comparative educational research and consulted several national educational reforms. Her research articles have appeared in journals such as *Social Policy and Administration*, *Comparative Education*, *Journal of Baltic Studies*, *International Journal of Public Policy*, *Studies of Transition States and Societies* and many others. Contact: anuto@tlu.ee; Skype: anu.toots



Kees van Kersbergen (kvk@ps.au.dk) is professor of Comparative Politics at Aarhus University, Denmark. His research interests lie in comparative politics, comparative political economy and comparative political sociology. He has published widely in the area of welfare state studies in refereed journals and with major university presses. He is the author of *Comparative Welfare State Politics: Development, Opportunities, and Reform* (2014, with Barbara Vis) and *The Politics of Inequality* (2017, with Carsten Jensen).



Ricardo Velázquez Leyer (R.Velazquez.Leyer@bath.ac.uk) is research professor of the Universidad Iberoamericana of Mexico City. He has a PhD in Social Policy from the University of Bath. He has worked previously at the Benemérita Universidad Autónoma de Puebla (BUAP) and the University of Bath. His research interests are the impact of social policies on poverty and inequality and the institutional analysis of social policy in Latin America. He has published research on the development of the Mexican housing sector, the impact of conditional cash transfers on poverty levels in Latin American countries and the politics of healthcare reforms in Brazil and Mexico. He teaches public policy and research methods. He coordinates the Latin America Social Policy Network, based at the University of Bath. He is a member of the National Researchers' System (SNI) of Mexico and is visiting research fellow of the University of Bath.



Patrik Vesan (p.vesan@univda.it) is an Assistant professor in Political Science at the University of Aosta Valley (Italy). Member of the Rescue Project team (www.rescue.eu), he also collaborates with the laboratory "Percorsi di Secondo Welfare" (www.secondowelfare.it). His main areas of research interest are: European and Comparative employment policies, public administration and policy analysis, comparative local development policy, European governance, multilevel governance theory and intergovernmental relations.



Chung-Yang Yeh (chungyang.yeh@gmail.com) is a Post-doctoral research fellow, RCHSS, Academia Sinica, and Adjunct Assistance Professor, Department of Social and Policy Science, Yuan-Ze University. He received his PhD from Division of Sociology, Social Policy & Criminology, the University of Southampton, the United Kingdom. His main research interests include 'comparative East Asian welfare states', 'welfare attitudes', 'pension policy' and 'poverty studies'. He has some Journal articles and books chapters focusing on pension policies, social investment policies and in-work poverty in East Asia.